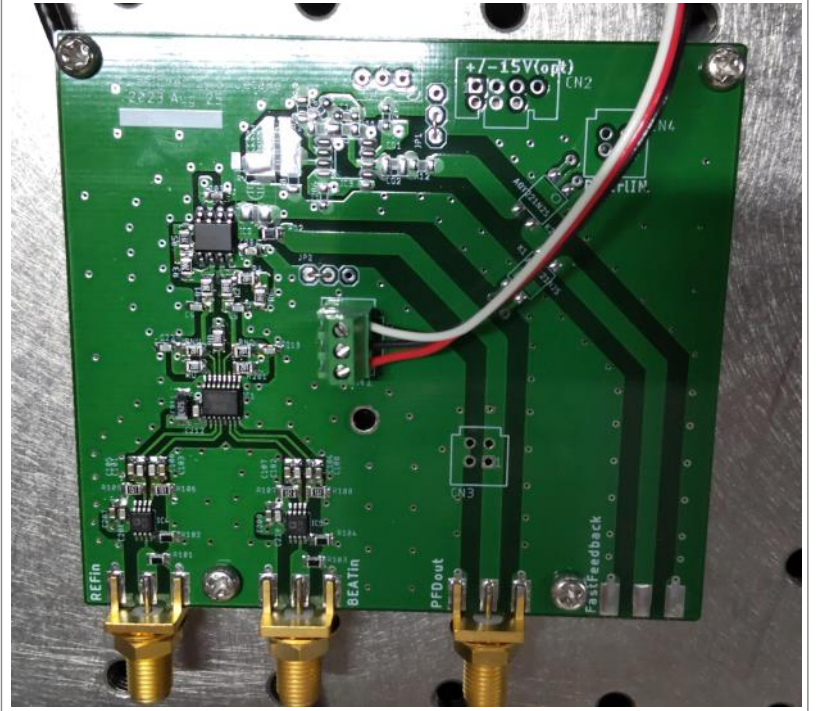


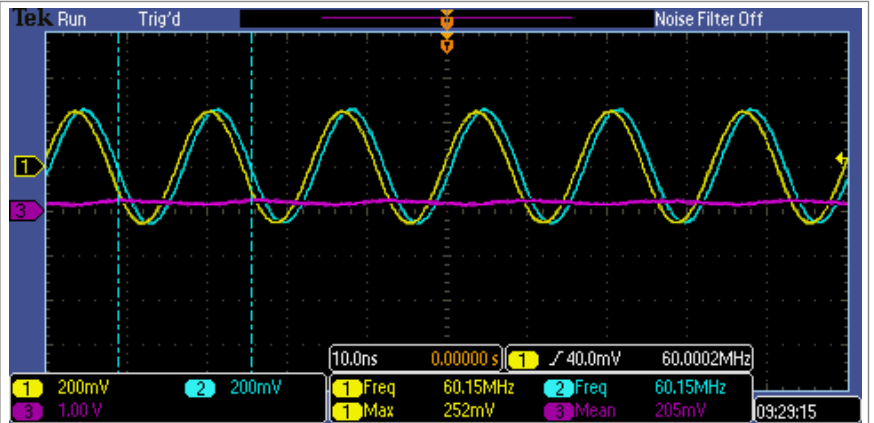
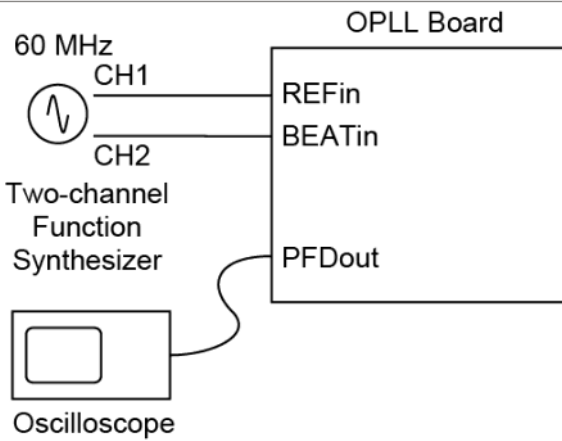
OPLL circuit test

2023年9月14日 20:32

The PCBs were delivered on 13 Sep. Then I soldered the rest parts and test them. The board looks like this ->



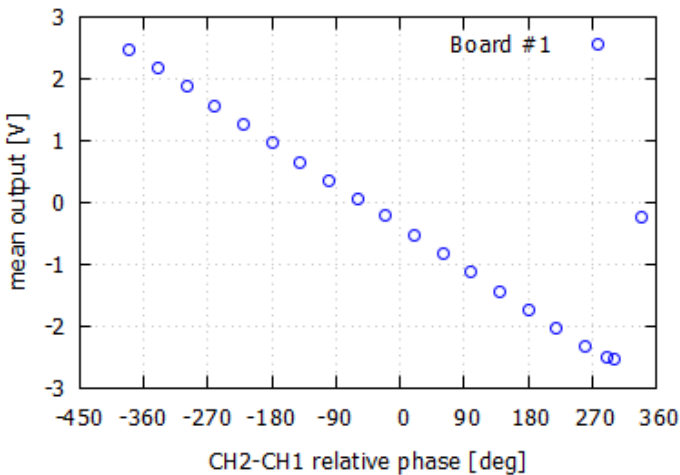
Test schematics



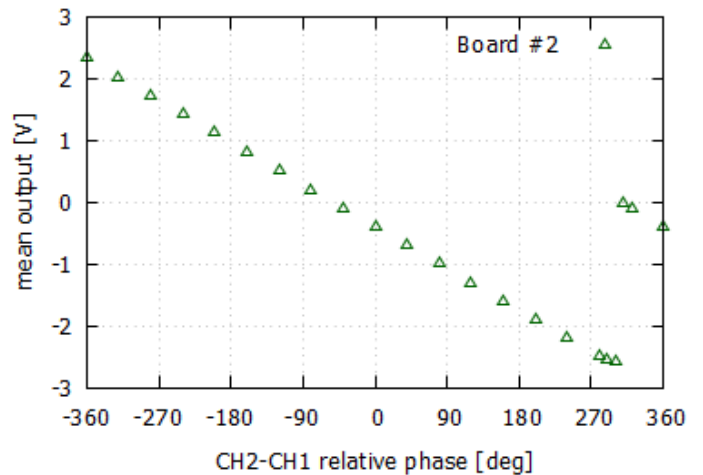
CH1 (yellow), CH2 (cyan): input sine wave (60 MHz)
CH3 (magenta): PFD output

Test results: linear output, $\pm 2\pi$ phase change was detected.

Board #1



Board #2



OPLL circuit How to (1)

2023年9月14日 23:44

Power supply

In order to use the OPLL circuit, +/- 5V power supply is required.

It should be connected to CN1, +5V (left), GND (center), -5V (right). This is labeled on the board as the photo below.

The drive current for this circuit is a few hundreds mA (I don't remember exact value, sorry). Thus wire width of AWG22 or thicker is better when the wire length from power supply is long (e.g. 4 inch).

